

Arland D. Williams

Anthem for the Souls You've Never Heard

#1141 in 3:33 for Grade 3 Band of the 3rd Millennium™
by © Stephen Melillo IGNA 4 October 2016, 2nd & 3rd Millennium

Commissioned by the 2016-2017 Midlakes Middle School Band
Clifton Springs, NY
Joe Godfrey, Director

Technical

A few simple items addressed at the onset of rehearsing this work provide for an educational experience in addition to the Musical one. For instance the rhythm to the right has 2 interpretations within the score, and if taking on a “march-style” at the *Alla Breve*, a *3rd*.

One interpretation is sweeping and full. The other is separated with the breath, and with the *same* notation interpreted as:

Built within the piece is an opportunity to have the *same notation change* from one feeling and style into another via the *Alla Breve* at measure 26.

Going back at measure 38, the *pulse* remains the same. It will feel like a ritard which is further stressed as the piece reaches its conclusion.

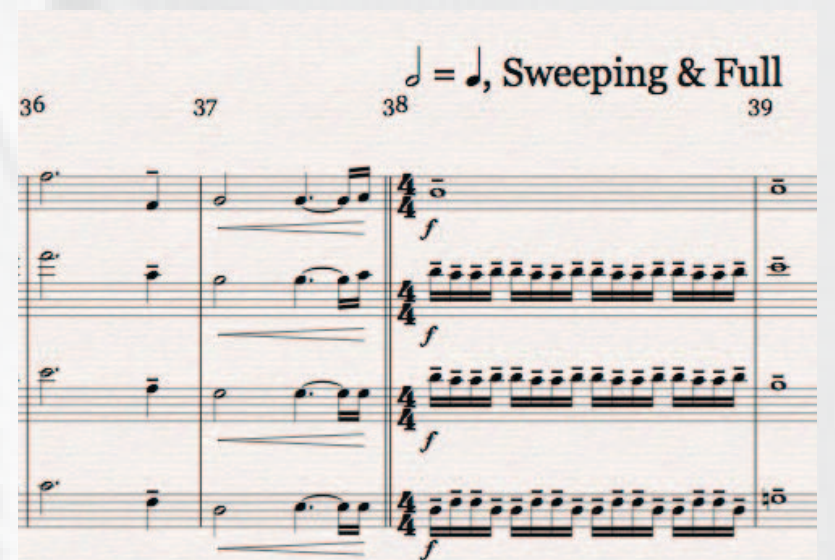
Musical

In keeping with *STORMQuest* and “*Wish to the World,*” here is yet another work inspired by and dedicated to a *hero*.

Arland Dean Williams Jr. was a passenger aboard Air Florida Flight 90, which crashed on take-off into the Potomac in Washington, D.C., on 13 January 1982, killing 78 people. One of six people to initially survive the crash, Arland helped five others before drowning.

A clergyman later said, “His heroism was not rash. Aware that his own strength was fading, he deliberately handed hope to someone else, and he did so repeatedly. On that cold and tragic day, Arland D. Williams Jr. exemplified one of the best attributes of human nature, specifically that some people are capable of doing anything for total strangers.”

Godspeed! Stephen Melillo



Arland D. Williams
Anthem for the Souls You've Never Heard

#1141 in 3:33 by © STEPHEN MELILLO
IGNA 4 October 2016, 2-3 MILLENNIUM
ASCAP

Stately, ♩ = 70

1 2 3 4 5 6 7 8 9 10 11 12 13

CHORUS (opt.)

Flute 1

Flute 2

Flute 3

Oboe 1

Oboe 2

Bassoon 1

Bassoon 2

Clarinet 1

Clarinet 2

Clarinet 3

Bass Clarinet in Bb

Alto Sax 1

Alto Sax 2

Tenor Sax

Bari Sax

Horn 1

Horn 2

Horn 3

Trumpet 1

Trumpet 2

Trumpet 3

Trombone & Eupho 1

Trombone & Eupho 2

Tuba, Bass Trombone

PAD Bass
pp (optionally come in only at m-13)

Timpani

Harp

Chimes

Orch Bells

Snare Drum

Sus & Crash

Bass Drum

Large Gong

CHORUS (opt.)

Flute 1

Flute 2

Flute 3

Oboe 1

Oboe 2

Bassoon 1

Bassoon 2

Clarinet 1

Clarinet 2

Clarinet 3

Bass Clarinet in Bb

Alto Sax 1

Alto Sax 2

Tenor Sax

Bari Sax

Horn 1

Horn 2

Horn 3

Trumpet 1

Trumpet 2

Trumpet 3

Trombone & Eupho 1

Trombone & Eupho 2

Tuba, Bass Trombone

PAD Bass

Timpani

Harp

Chimes

Orch Bells

Snare Drum

Sus & Crash

Bass Drum

Large Gong